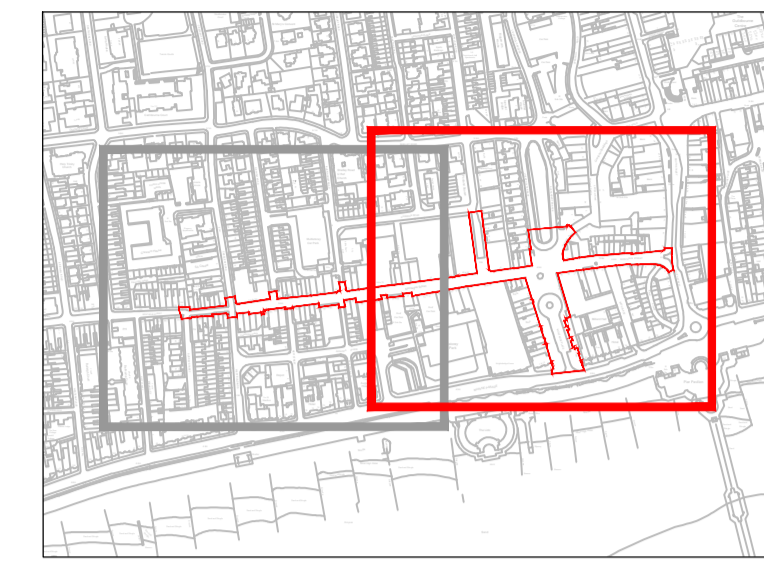
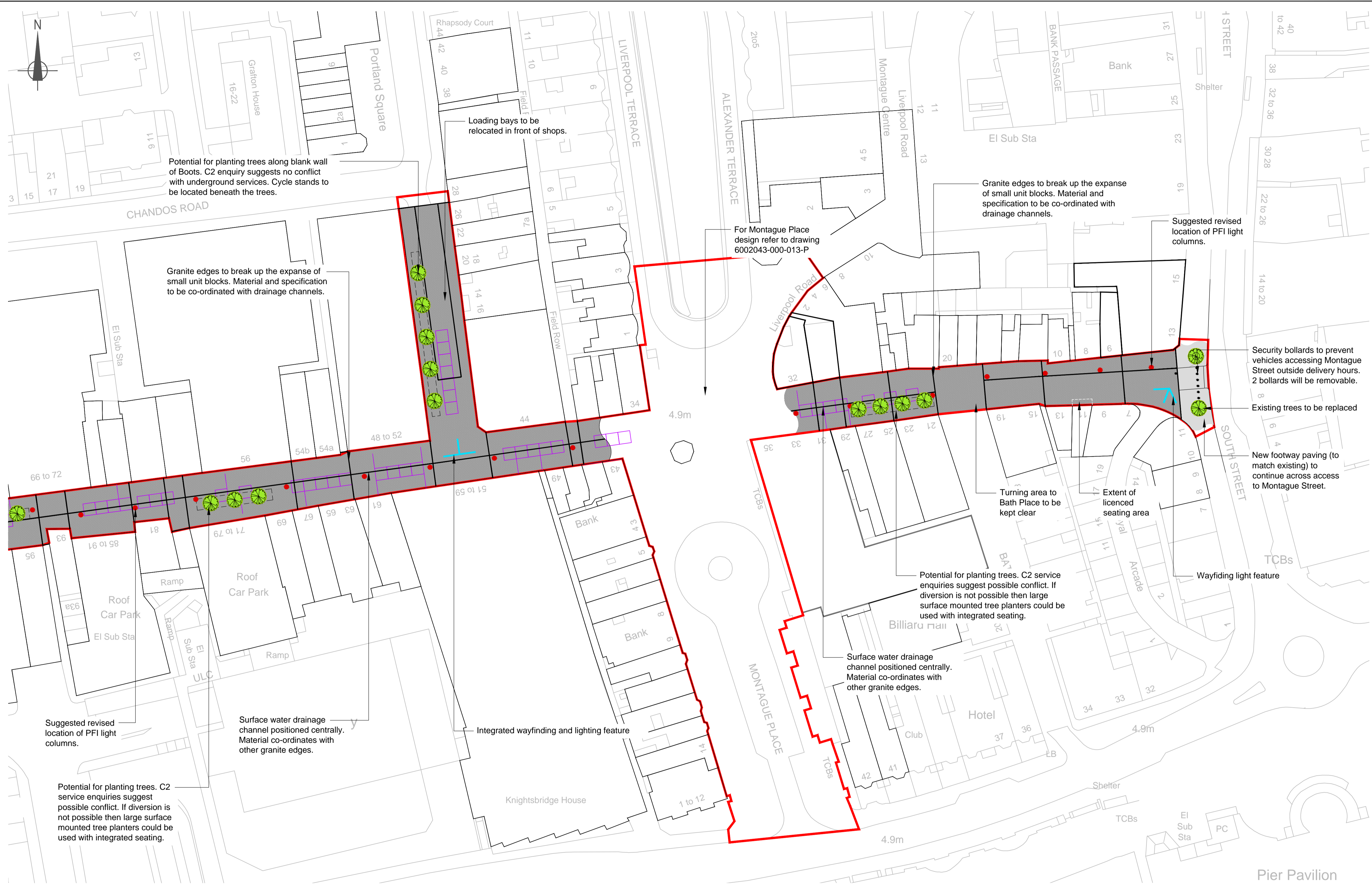


Reproduced by permission of Ordnance Survey on behalf of HMSO. Crown copyright and database right 2014. All rights reserved. Ordnance Survey Licence number: 100018485



- Key**
- Proposed street tree
 - Marshalls Metrolinia block paving in two colours: City Silver Grey and City Charcoal Grey.
 - Layout of market stalls
 - Integrated lettering and in ground light feature
 - Suggested revised location of PFI light columns



Rev	By	Chkd	Apprv	Date	Description
3	KD	PN	CW	22/8/14	Seating area added
2	KD	AW	CW	28/7/14	Issue following steering group comments
1	KD	AW	CW	10/7/14	Issue following steering group comments
0	KD	AW	-	-	First issue



CH2MHILL.
 Elms House
 43 Brook Green
 London, W6 7EF
 TEL: +44 (0)20 3479 8000
 FAX: +44 (0)20 3479 8001
 www.ch2mhill.com

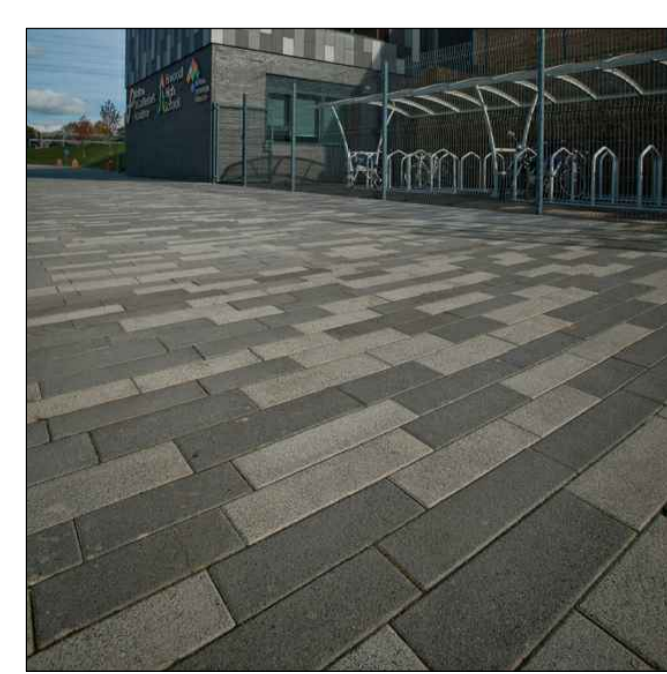
Project
Montague Street - Worthing

Drawing
Montague Street Feasibility Plan
 Sheet 2 of 2

Drawn by: KD Date: 19/05/2014
 Checked by: AW Date: 19/05/2014
 Approved by: CW Date: 20-05-2014

Drawing No. **6002043-000-010-P** Revision **3**

Drawing Scale: 1:500 @A1



Marshalls Metrolinia block paving in two colours: City Silver Grey and City Charcoal Grey.



Example of tree planter



Lettering integrated into paving in Bristol



Combining way finding into a light feature

Drawing file path & name: \\Lond4s-j61\Transportation\EU_Projects\468-226 - WSCC Professional Services Contract\Projects\DA - Highway Improvements\6002043 - W 6002043-000-010-P Montague Street Feasibility Plan.dwg