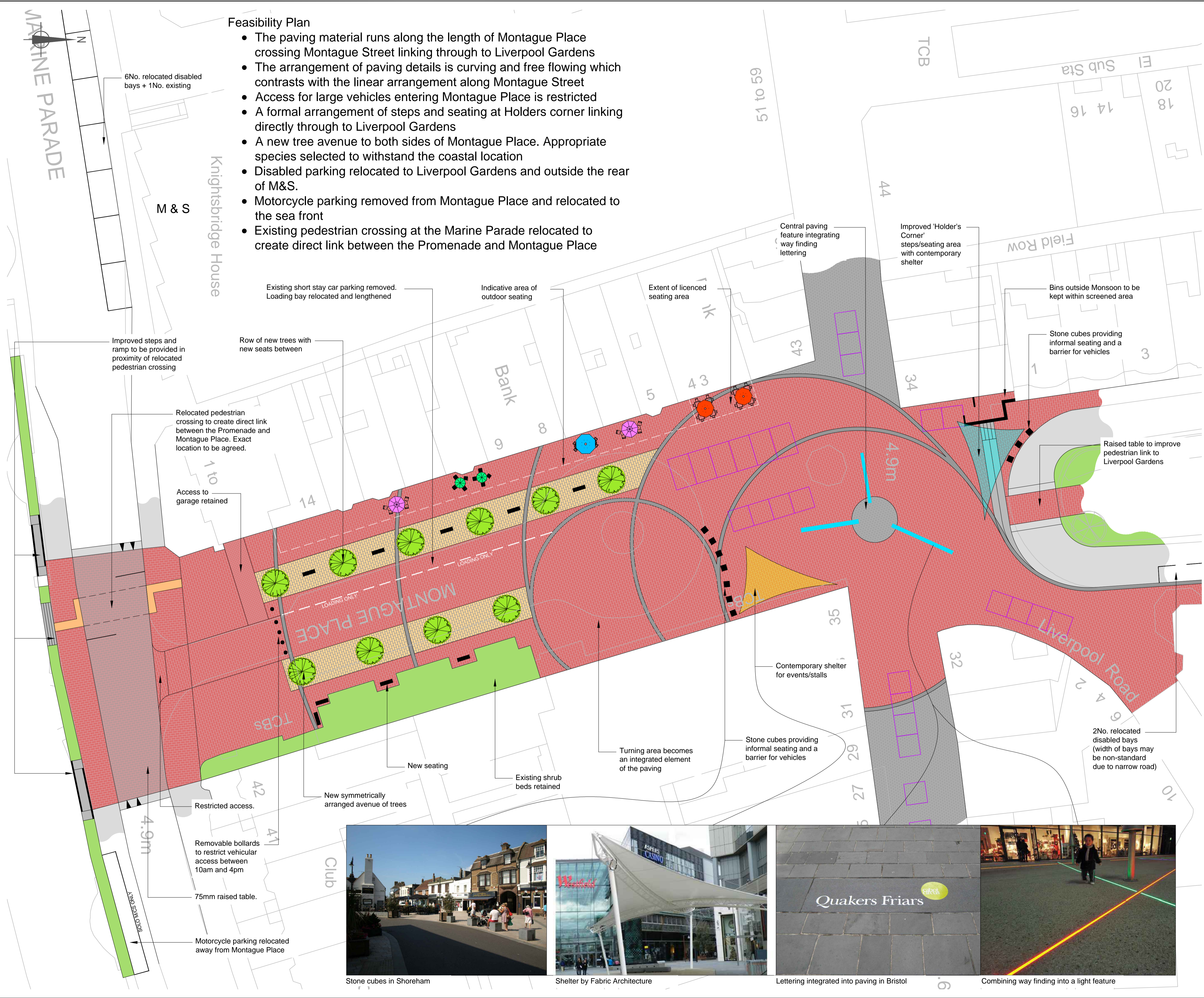


Reproduced by permission of Ordnance Survey on behalf of HMSO. Crown copyright and database right 2014. All rights reserved. Ordnance Survey Licence number: 100018485

Feasibility Plan

- The paving material runs along the length of Montague Place crossing Montague Street linking through to Liverpool Gardens
- The arrangement of paving details is curving and free flowing which contrasts with the linear arrangement along Montague Street
- Access for large vehicles entering Montague Place is restricted
- A formal arrangement of steps and seating at Holders corner linking directly through to Liverpool Gardens
- A new tree avenue to both sides of Montague Place. Appropriate species selected to withstand the coastal location
- Disabled parking relocated to Liverpool Gardens and outside the rear of M&S.
- Motorcycle parking removed from Montague Place and relocated to the sea front
- Existing pedestrian crossing at the Marine Parade relocated to create direct link between the Promenade and Montague Place



Key

- Existing vegetation
- Proposed street tree
- Marshalls Metrolinia block paving in two colours: City Silver Grey and City Charcoal Grey.
- Marshalls Metrolinia block paving in red
- Concrete block paving (TBC)
- Marshalls La Linia block paving in Indian Granite (TBC)
- Macadam surface (TBC)
- Layout of market stalls
- Integrated lettering and in ground light feature
- Channel edges to break up the expanse of small unit blocks. Material and colour to be confirmed.
- Outdoor cafe seating

2	KD	PN	CW	22/8/14	Outdoor cafe seating added
1	KD	PN	SY	1/8/14	Raised table added, mosaic removed
0	KD	AW	CW	29/7/14	First issue
Rev	By	Chkd	Apprv	Date	Description

Client

Elms House
43 Brook Green
London, W6 7EF
TEL: +44 (0)20 3479 8000
FAX: +44 (0)20 3479 8001
www.ch2mhill.com

CH2MHILL.

Project
Montague Street - Worthing

Drawing
Montague Place Feasibility Plan

Drawn by: KD	Date: 25/07/2014
Checked by: AW	Date: 28/07/2014
Approved by: CW	Date: 29/07/2014
Drawing No.	Revision
6002043-000-013-P	2

Drawing Scale: 1:250 @A1

